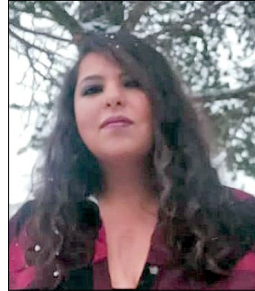




Welcome Work-study Student Faith Maske

Faith Maske is a new work study student in the Learning Commons. She graduated from Penn Foster High School in 2014. She is a freshman in the general studies program. After graduation her goal is to attend a performing arts school and eventually earn a bachelor's degree in fine art. She enjoys various art forms from creative writing, filmmaking, singing, acting, and performing on stage. She took a theater class in the spring and performed a monologue during the student showcase in May. She was born and raised in El Paso but moved to Ruidoso two years ago. She is available to help any faculty or students who need assistance. She has a jewelry business and sells it at the local farmers markets. When not working or studying, she enjoys relaxing, playing video games, listening to music and football. She enjoys working with her aunt Miriam Maske, ENMU-Ruidoso Director of Learning Commons & Distance Education.



NMWCC Welcomes Youth Career Coach Gray Mowery

Gray recently joined the New Mexico Workforce Connections full-time as a Youth Career Coach. He has a bachelor's of fine arts in theater from Tarleton State University and has a teaching certificate. He most recently taught senior English and theater at Ruidoso High School and previously worked as a theater manager and technician at Texas Star Dinner Theater and Naman Forest High School in Garland, Texas. He and his wife, Sydnee, who also recently started at ENMU-Ruidoso as the new Dual Credit and Retention Specialist, moved to Ruidoso four years ago. They are foster parents and will soon be adopting their first two sons. They have two dogs, Lucifer and Gemma, one cat, Mazikeen, and multiple fish that are ever changing.



Communication for Closing Campus

When the determination is made to close the campus for weather-related or emergency situations the President's Office will communicate the decision to all faculty, staff and students by messages posted on the College [website](#) and [Facebook page](#) and to your email, as well as the following TV and radio stations will be notified:

- KOB-TV 4 & 8, KOAT-TV 7, KRQE-TV 13
- KBUY 1360AM/105.9FM, KIDX 101.5FM, KRUI 1490AM, KWES 1450AM/93.5FM, KMWM 105.1FM, KNMB 96.7FM

Upcoming Events

October

16 Monday

- ◊ Flu Shots, Rm226, 9-11a
- ◊ 2nd 8-Week Classes begin

17 Tuesday

- ◊ Central Regional Cooperative, Rm201 & Tiered Area, 8a-5p

18 Wednesday

- ◊ Central Regional Cooperative, Rm201 & Tiered Area, 8a-5p
- ◊ Feed Your Brain presents Lisa Sparks, The Archaeology of Pre-history in the Sierra Blanca Region, Learning Commons, 12p

19 Thursday

- ◊ President's Ambassador Club Meeting, Rm 221, 5p
- ◊ Pizza with ENMU Portales Education Dept. Chair Dr. Kathie Good, Tiered Area, 6p



Dr. Kathie Good, ENMU Portales Education Department Chair, will be on campus **Thursday, Oct. 19 at 6 p.m.** in the tiered area for **Pizza with a Professor.**

Dr. Good will speak about the opportunities available when transitioning to the ENMU Portales Campus.

In addition, on **Friday, Oct. 20, from 9 a.m. to Noon** Dr. Good will offer advising appointments for students interested in transferring to ENMU Portales.



ruidoso.enmu.edu RUIDOSO

5th Monday Community Dinner

You're Invited to Join Us for a FREE Meal

planned & prepared by Spencer Theater Chef William Wilson
Monday, Oct. 30, 2023, 5:30-7 p.m. at ENMU-Ruidoso, 709 Mechem Dr., Ruidoso

Dine-In or Takeout

Menu: Chili Dogs, Frito Pie, Baked Potatoes, Side Salad & Dessert. Water & Tea.

Sponsored by:

20 Friday

- ◊ ENMU BOR Meeting, Portales, 8:30a
- ◊ Alto Preservation Coalition Meeting, Rm226, 10a
- ◊ ENMU Portales Advisor appointments available for Education majors, 9a-12p

21 Saturday

- ◊ Free Legal Fair, Rm 201, 202, 203, 209 & Tiered Area, 9a-2p
- ◊ Early Voting, Rm106, 10a-6p