



New ENMU-Ruidoso Community College Board Member Sworn In

Colton Harrelson was recently appointed a new Community College Board Member and sworn in at the board meeting Feb. 22. He received a Bachelor of Science degree in Business from New Mexico State University and has Secondary Teaching Certificates from ENMU for Math, Social Studies, Business, Science and Agriculture. Mr. Harrelson is currently retired; his career history includes working for Farm Credit – Wichita District for ten years and he was a Secondary Teacher for 24 years, 16 of which were in Ruidoso. He also coached football, volleyball, basketball and track and field. Mr. Harrelson was born and raised in New Mexico and has been a resident of Ruidoso for 24 years. He enjoys fishing, hunting, camping and all other outdoor activities. His family includes his wife of 44 years, Debbie, and two children, Jake and Andi.



Pictured left to right: ENMU-Ruidoso's locally elected Community College Board members: Board Secretary Marla Frye-Romero, Colt Harrelson, Board Chair Brad Treptow, Murray Murphy and Rachael Rosillo.

Education Department Chair Cleo Mow Recognized with Phi Theta Kappa Horizon Award

The Phi Theta Kapp Regional Honor Society met at ENMU-Ruidoso Feb. 23-24. Student and PTK member Robin Woodward was chosen as the Regional Secretary, and Education Department Chair Cleo Mow was nominated to be on the Regional Council. The ENMU-Ruidoso PTK Beta Pi Sigma Chapter was honored with the Horizon award for continuing to grow our student honor society on campus.



Cleo Mow

Upcoming Events

March

- 11-15 Monday through Friday**
 - ◇ Spring Break, Campus Open, No Classes
- 12 Tuesday**
 - ◇ Foundation Board Meeting, Rm226, 4p
- 13 Wednesday**
 - ◇ Maze of Life, Carrizozo, Corona & Capitan 8th Graders, 9-11:30a
 - ◇ Shane Hoffman presents "From Ruidoso High School to Professor & YouTube Star," Rm106, 11:30a
 - ◇ Maze of Life, Mescalero & Hondo 8th Graders, 12:45-3p
- 14 Thursday**
 - ◇ Maze of Life, Ruidoso 8th Graders, 9-11:30a & 1-3:30p
- 15 Friday**
 - ◇ Art Methods Series: Anatomy of a Shadow, Annex, 10a-12p
 - ◇ Humane Society of Lincoln Co. Pet Adoption, 12-3p
- 18 Monday**
 - ◇ NM MESA Academic Competition, Rms 201, 203, 209, Tiered Area, 8a-5p
- 19 Tuesday**
 - ◇ NM MESA Academic Competition, Rms 201, 203, 209, Tiered Area, 8a-5p
- 21 Thursday**
 - ◇ Community College Board Meeting, Rm209, 5p
 - ◇ Classic Film Night, The Big Sleep (1946), Rm201, 6p
- 22 Friday**
 - ◇ ENMU Board of Regents Meeting, Portales, 8:30a
- 23 Saturday**
 - ◇ Teaching & Learning Workshop for Faculty, Rm101, 8:30a-3:15p
- 30 Saturday**
 - ◇ Art Methods Series: Anatomy of a Shadow, Annex, 10a-12p
- 31 Sunday**
 - ◇ Easter

ENMU-Ruidoso Community Development presents
The ART METHODS Series

Spring 2024

**ENMU-Ruidoso Annex
 Fridays OR Saturdays
 10:00 am to 12:00 noon
 \$25 per class**

NEW ART STUDIO TIME

8-week Uninstructed Art Studio (\$50)
 March 11 to May 9, M-Th, 10am-3pm
 Uninstructed art studio time to practice your medium of choice. Facilitator: Susan Travis



Native Pot by Regina Lane

Proportions of the Face

Saturday, March 9
 Depict faces with natural proportions as a preliminary step to portrait. Instructor: Regina Lane

Anatomy of a Shadow

Friday, March 15 OR Saturday, March 30
 Depict water droplets with lights and shadows falling in their proper place. Instructor: Susan Travis

Elements of a Water Droplet

Saturday, April 6 OR Friday, April 19
 Depict water droplets with lights and shadows falling appropriately. Instructor: Susan Travis

Values & Shadows of the Face

Friday, April 12 OR Saturday, April 27
 Depict natural looking faces complete with highlights and lowlights as a preliminary step to portraiture. Instructor: Regina Lane

Beginning Oil Painting

Friday, May 3 OR Saturday, May 11
 Become acquainted with supplies and basic preparations for oil painting in order to easily move forward as artists in the medium of oil. Instructor: Regina Lane

Basics of Perspective

Friday, May 17 OR Saturday, May 25
 Draw solid objects which give a realistic impression of their height, width, depth, and position in relation to each other when viewed from a particular point. Instructor: Susan Travis

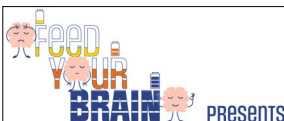
Phone or text Susan @975-837-0294 with any questions; additional details and supply information shown on registration page.



INSTANT PHONE REGISTRATION!
 Open your phone camera and point it at the square to the left! Phone Number: 975-837-0294, Community Development Director @ 975-837-0294 for help registering.

Donations to program are joyfully accepted.

Register and pay online or on campus: RUIDOSO: ENMU.EDU/08 Possibilities. Elevated. Ruidoso Branch Community College



Shane Hoffman

From Ruidoso High School to Professor & YouTube Star



Shane Hoffman is a 2006 graduate of Ruidoso High School. He graduated summa cum laude from the Missouri School of Journalism and then went on to Oklahoma State University for his master's degree.

He has been a full-time multimedia journalism professor at OSU for over 10 years, and also runs a globally successful YouTube gaming channel known as "Prof Hoff" to his subscribers. The channel has surpassed over 60K subscribers and 50 million views worldwide.

Professor Hoffman has a passion for helping students tell great human interest stories across all media/social media platforms.

Learn More

March 13 • 11:30 a.m. • ENMU-Ruidoso, Room 106 • Lunch will be provided.